
2250

Alfred-Nobel Boulevard,
Saint-Laurent



Office space at the heart of innovation
in Montréal's premier tech hub

UNITS FROM 4,413 - 13,841 sq. ft. | FOR LEASE



Highlights



AN ECOSYSTEM OF INNOVATION

Located in the Technoparc Montréal,
a leading Canadian technology hub
with over 100 companies.



PRIME LOCATION

Easily accessible via Highway 40; steps
away from the new Marie-Curie REM
station with fast connections to downtown
and the airport (estimated opening in 2027).



RENOVATED COMMON AREAS

Tenants will benefit from a refreshed lobby,
modernized common areas and bathrooms,
and a new gym on the ground floor.



BOMA BEST CERTIFIED

This building meets internationally-
recognized standards of sustainability,
efficiency and performance.



Availability	Immediate
---------------------	-----------

Unit 100	5,016 sq. ft.
-----------------	---------------

Unit 200*	8,078 sq. ft.
------------------	---------------

Unit 203*	4,413 sq. ft.
------------------	---------------

Unit 405	7,002 sq. ft.
-----------------	---------------

*Can combine units 200, 201 & 203
for a total of 13,841 sq. ft.

Parking	Exterior (free & first come, first served)
----------------	--

Building amenities	Fully equipped gym (free for tenants) Outdoor patio area
---------------------------	---

Floor plate	16,282 sq. ft.
--------------------	----------------

Year built	2001
-------------------	------

Class	A
--------------	---

Generators	2
-------------------	---

UNIT 200: 8,078 sq. ft.

*Spacious & bright
move-in ready unit.*
Central area for
open workstations,
4 closed offices,
3 conference rooms,
and a kitchenette.



UNIT 200: 8,078 sq. ft. (cont'd)

Floorplan & build-out



**Bright central area
for open workstations**



**4 closed offices with
excellent luminosity**



**Closed
office**



UNIT 203: 4,413 sq. ft.

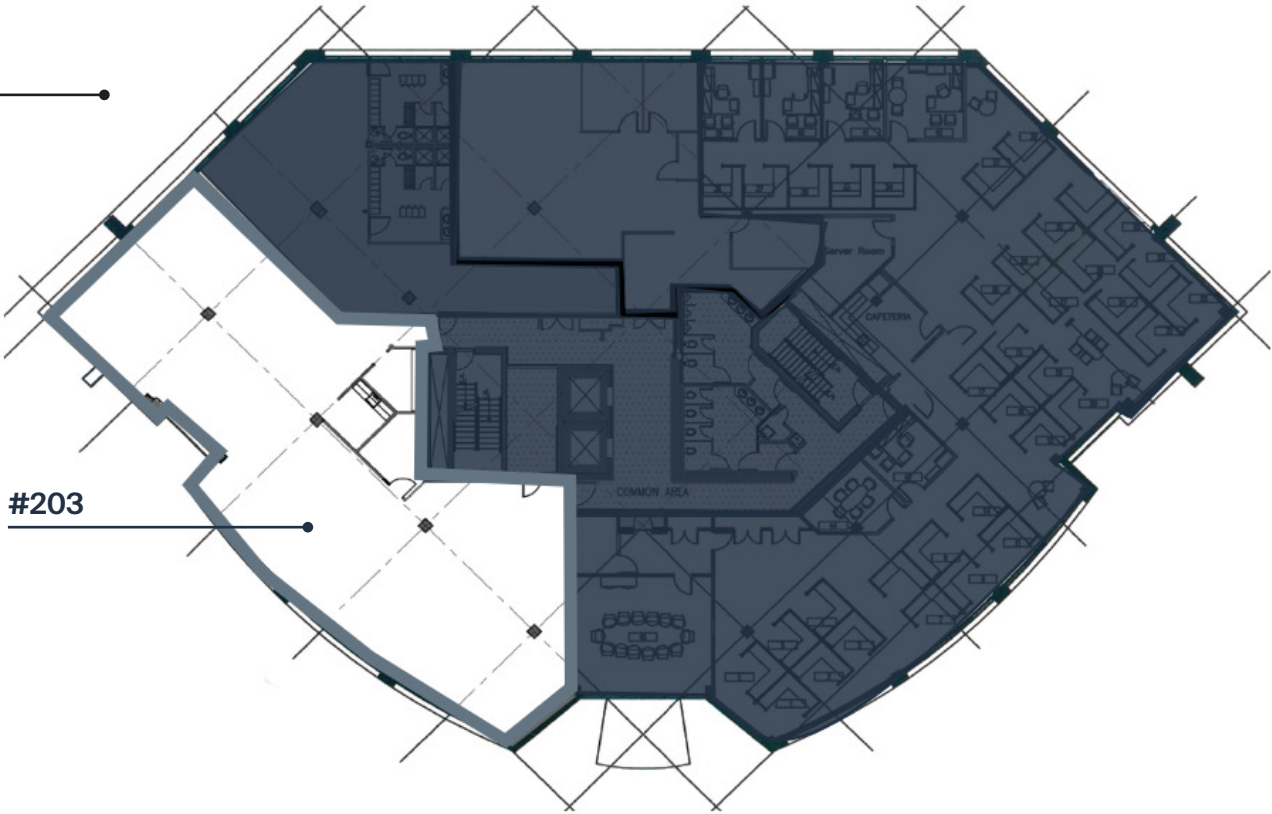
*Bright and open
move-in ready* office
space with plenty
of open workspace,
1 closed office, a
kitchennette
and a reception area.



UNIT 203: 4,413 sq. ft. (cont'd)

Floorplan

(not including build-out)



Reception



Bright closed office



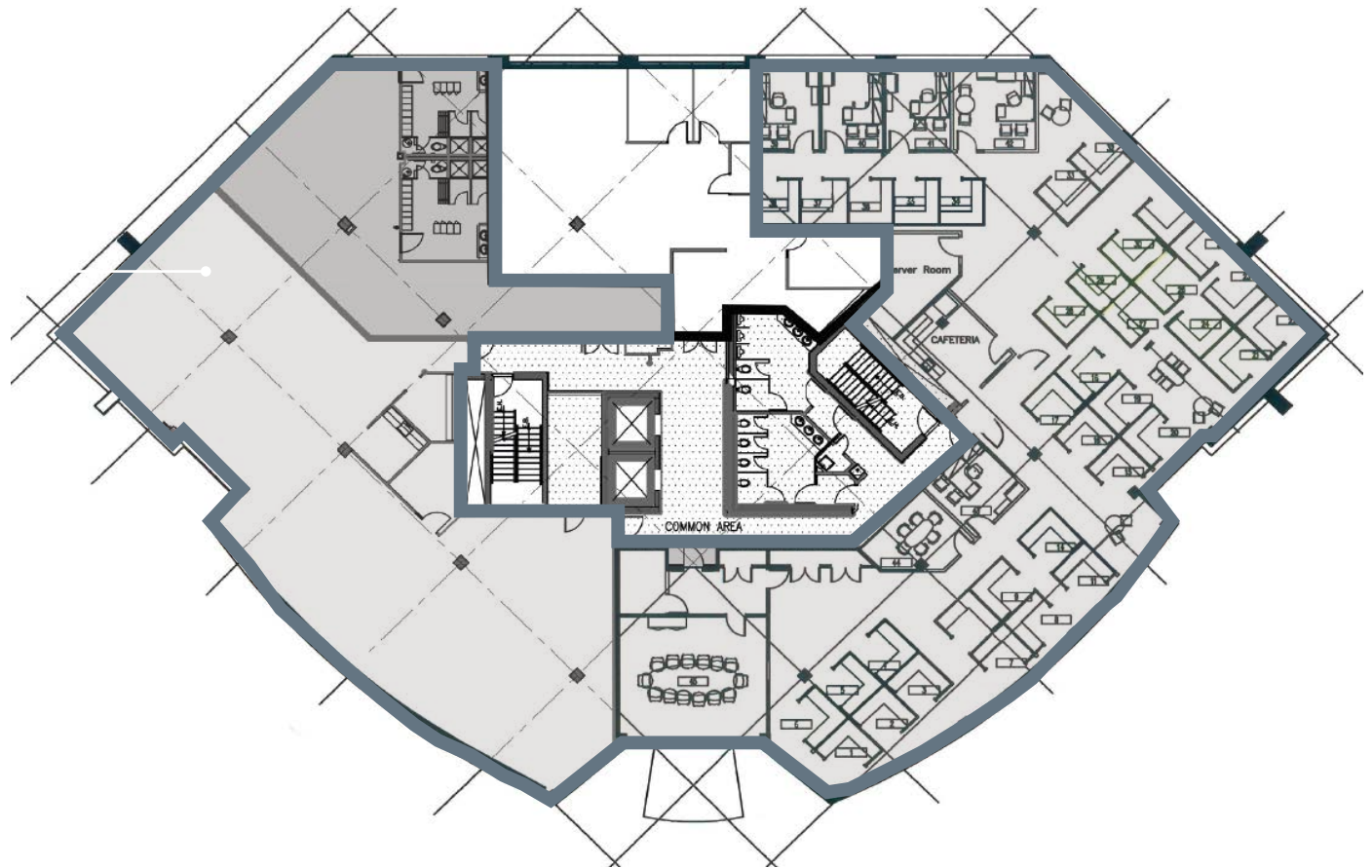
Kitchenette



2ND FLOOR: 13,841 sq. ft.

Opportunity
for *contiguous units*

2ND FLOOR:
13,841 sq. ft.

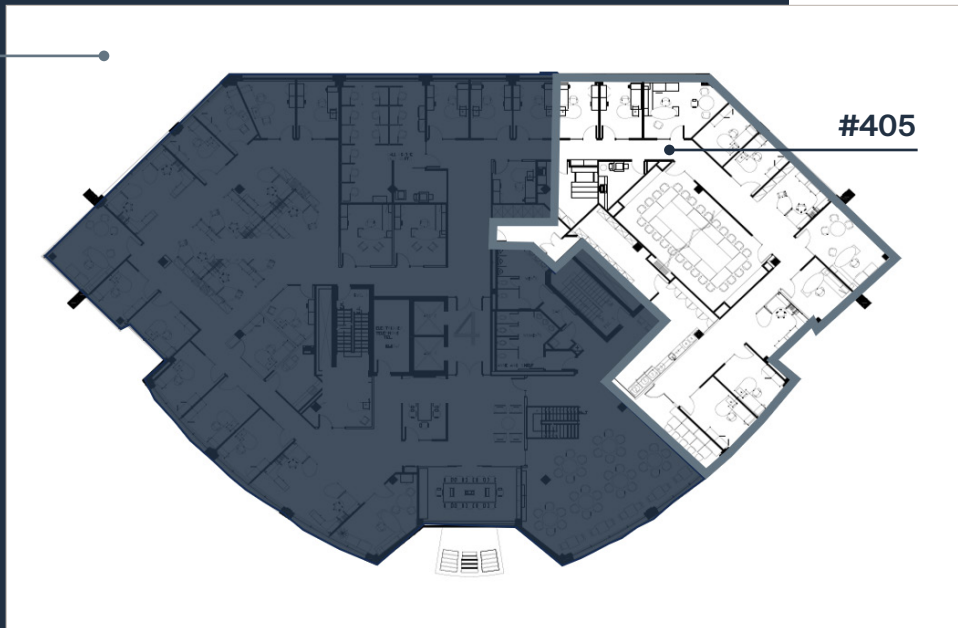


UNIT 405: 7,002 sq. ft.

Luminous & spacious unit comprised of 9 closed offices, each with big windows, and a central common space/large conference room.



Floorplan



2250 Alfred-Nobel is located in *Technoparc Montréal*, the ideal environment for *innovation*.



EASY ACCESS TO
HIGHWAYS 40 & 13



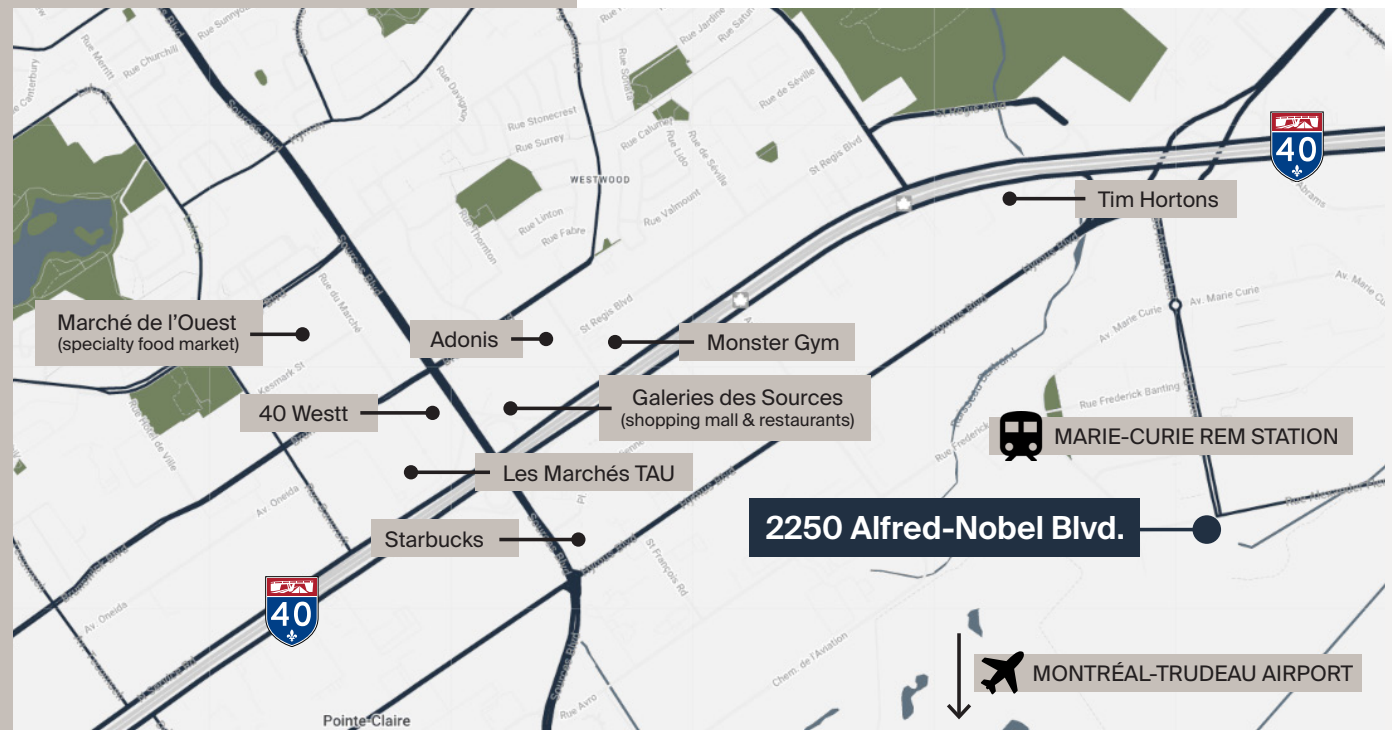
MARIE-CURIE
REM STATION

5-minute walk away
(estimated opening in 2027)



IN PROXIMITY TO AMENITIES

10-minute drive to several amenities
including restaurants, shopping
malls, hotels & more.



THE BUILDING

Technology and innovation meet functional workspaces at 2250 Alfred-Nobel, at the center of Montréal's premier tech hub.



Common areas including brand-new renovated gym & bathrooms.



Let us help you build
the environment that
fits your vision.

Alexandre Cowper

Senior Leasing Director, Montréal

514 286-0188, ext. 243

acowper@btbreit.com

Stéphanie Léonard

Senior Leasing Director

514 286-0188, ext. 256

sleonard@btbreit.com

